

表面絕緣電阻量測系統(SIR-2006)
Surface Insulation Resistance Measurement System



表面絕緣電阻量測系統 (SIR-2006) Surface Insulation Resistance Measurement System

High Technology 科技創新技術



全程偵測遷移狀況

完整偵測各軌發生遷移狀況，不間斷持續監控
Completely detecting of migration in each track, available with uninterruptedly continuous monitoring



各層設定不同測定條件

各層彈性設定 (群組 & 時間 & 電流保護 & 洩漏電流偵測點 等)
Flexible setting for each layer (group, time, current protection and detection point of current leakage, etc.)



超大擴充200channel

超值標配40channel超大擴充可到200channel
Value-added standard configuration of 40 channels, expandable to 200 channels



數據即時曲線化顯示

即時讀取時間 / 電阻值 / 溫度 / 濕度之讀值
Real-time reading of time, resistance value, temperature and Humidity



軌道程式設定畫面
Setting sceng for channel program



多軌量測結果同步顯示畫面
Simultaneous display of multi-channel measuring results

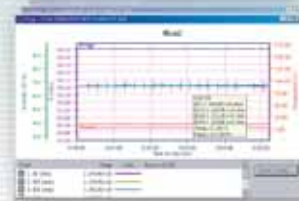
轉換EXCEL報表
Conversion to Excel report



SIR系統控制主畫面
Main scene of SIR system control



(新架構)
高速洩漏電流偵測
應用範圍：
離子遷移、CAF
(New infrastructure)
High-speed detection of current leakage
Applicable scope - ion migration, CAF



正常絕緣電阻紀錄
應用範圍 - 絕緣電阻
Recording of normal insulation
Applicable scope - insulation
resistance resistance

SIR系統架構圖 (SIR system architecture diagram)



伺服RAID同步雙硬碟備份
Double disk synchronized backup with Servo RAID

表面絕緣電阻量測系統規格表 Surface Insulation Resistance Measurement System Specification

規 格 Specification	表面絕緣電阻量測系統 (SIR-2006) Surface Insulation Resistance Measurement System(SIR-2006)	
外型尺寸 Exterior dimension	600 × 1731 × 850 mm (W*H*D)(包含突出部份)	
電 氣 特 性 (Electrical properties)	標準軌道 Standard channel	40Channel (最大 200 Channel)
	最大控制 Maximum control group	5 Group
	試驗設定 Test setting	群組設定 Group setting (START / STOP)
	測定電壓範圍 Measurement voltage scope	0.5V 250V(0.5~200V/0.1Step , 200V以上/1V Step)
	電阻量測範圍 Resistance measurement range	1 × 10 ⁶ 1 × 10 ¹³
	洩漏電流測定範圍 Measurement scope of leakage current	10pA~500uA
	洩漏電流測定速度 Measurement rate of leakage current	1us
	資料取樣速度 Data sample rate	5 sec
	Bias Supply 方式 Bias Supply mode	1 Power Supply 40 CH(群組設定啟動) 1 Power Supply 40 CH(Group setting startup) 若任1CH短路時, Alarm顯示, 其他CH繼續執行試驗 If any 1CH is in short circuit, Alarm displayed, while other CHs continue testing.
	電壓設定 Voltage setting	Bias & Test 電 壓 40 CH(Bias正負電壓/test正電壓設定) Bias & Test voltage 40 CH(Setting of bias positive & negative voltage test/positive voltage setting)
	最大試驗時間 Maximum test time	9999Hr
溫 度 量 測 (T/H measurement)	資料讀取&link台數 Data reading & link number of machines	同時讀取/記錄各Chamber溫濕度值/最大3台Chamber Simultaneously read/record the maximum T/H values of each Chamber/maximum three Chambers
	測試時間調整 Adjustment of test time	測試時間運轉中延長/縮短(1Min 9999Hr任意調整) Test time can be adjusted from 1Min - 9999Hr during the test process
量 測 線 材 (Measurement wire)	Bias Cable斷線檢出功能 Bias Cable breakage detection	斷線&短路檢出(量測資料經由程式判斷) Breakage & short circuit detection (the measured data is judged by the program)
	Cable線材 Cable wire	同軸鐵弗龍披覆純銀導線 Coaxial Teflon-coated pure silver conduit
資 料 收 錄 (Data collection)	收錄資料應用 Application of collection data	16種應用資訊 16 types of application information
	離子遷移資料分析 Analysis of ion migration data	記錄遷移 發生 / 結束時間 Recording of the occurrence/end time of migration
	EXCEL報表轉換 Excel report conversion	設定條件資料、量測資料、遷移資料完整轉換成EXCEL檔案 Set condition data, measurement data and migration data to be completely converted as Excel files
電 源 Power source	AC110V&220V ± 10% , 50/60Hz	
環境溫度 Environmental temperature	+5 +30	
標 配 standard equipments	量測探棒、量測夾具、PCB放置治具、驗證用比對電阻(5種不同高阻值1M 10G) Measurement probe and Alligator Clips, PCB placement fixture, and resistances (five big resistances of 1M 10G) for comparison and verification	

測試電壓(Test voltage) : 50dc時, 在測試導線末端檢測值(At 50dc, the value measured at the end of the test conduct).

以上規格, 請以實體為主, 最終解釋權歸本公司所有

(For above accessories, their actual specifications may vary. The right of final interpretation belongs to our company.)

標準電腦配備 Computer to be equipped (IBM 相容個人電腦)

- ◆ C P U : Intel雙核心以上 ◆ R A M : 1GB 記憶體以上 (1GB of memory or more)
- ◆ H a r d D I S K : 2個80GB硬碟以上 (Two hard disks with the capacity of 80GB or more)
- ◆ 作業系統(OS) : Win Xp單機版以上 (At least Windows Xp standard edition)
- ◆ 顯示器(Monitor) : 17吋TFT螢幕 (17" TFT LCD)
- ◆ 網路卡(NIC) : 10/100M
- ◆ 燒錄器(Burner) : DVD燒錄機
- ◆ 資料保護(Data protection) : 伺服器RAID架構磁碟陣列雙硬碟資料同步備份 (Server Raid dual hard disk data synchronized backup)
- ◆ U P S : 不斷電系統可持續30分鐘以上 (UPS can sustain for at least 30 minutes)

www.kson-cn.com

昆山慶聲電子科技有限公司

昆山 江蘇省昆山市周市鎮陸揚迎賓西路3號

TEL : (0512)57764900

FAX : (0512)57764100

E-mail : kson@mail.kson.cn

東莞 廣東省東莞市黃江鎮黃江大道547號

TEL : (0769)83517581

FAX : (0769)83517580

E-mail : kson-dg@kson.cn

營業項目 -

恆溫恆濕機(標準型/超低濕型/等溫型/太陽能專用/光顯示器專用)/KES應力篩選試驗機/冷熱衝擊機(三箱氣體式/二箱移動式)/等均溫快速溫變試驗機/氙弧燈耐候試驗機/自然對流試驗機/恆溫恆濕室/高壓加速壽命試驗機/小型壓力鍋/複合型環境試驗機/智慧型高阻計/超高阻計/精密溫濕度計/切換式超高電阻箱/導通電阻量測系統/數位收集系統/高速離子遷移量測系統/表面絕緣電阻量測系統/e化管理系統/預燒室/蒸氣老化壽命試驗機/實驗室機台管理系統